



**Satellite™\* 18x32 mm Item Level EPC Gen 2 RFID Products**

**RF IDentics designs and manufactures high performance, low-cost RFID tags using proprietary processes developed specifically for high volume production.**

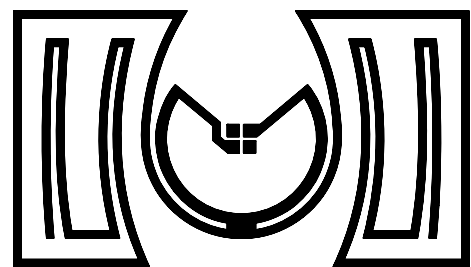
RF IDentics' Class 1 Gen 2 RFID products deliver high-speed, long-range, data rewritability while maintaining full compatibility with the EPCglobal Gen 2 specification

**Applications** Point of sale, asset management, and retail security

**Specifications**

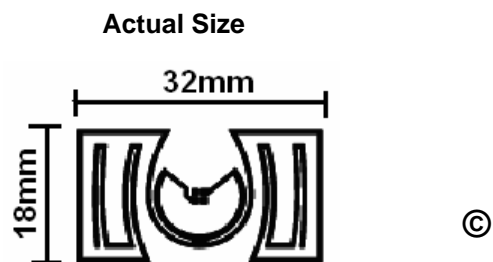
<b>Frequency</b>	902 - 928 MHz
<b>Chip Set</b>	Impinj Monza™
<b>Protocol</b>	<i>rewritable</i> Class 1 Gen 2
<b>EPC Memory</b>	96 bit
<b>User Memory</b>	up to 96 bits
<b>Data Retention</b>	10 years
<b>Max Read Range*</b>	Dependent on reader
<b>Working temperature</b>	-40°C to +85°C
<b>Form Factor</b>	Single file rolls, 3" core
<b>Substrate</b>	Coated paper, film
<b>Inlay Size</b>	Custom
<b>Pitch</b>	Custom

\*Read range results depend on tag orientation, reader, ambient RF noise, and case contents.



**Features**

- Advanced Conductive Ink
- Patented Self-Adaptive Silicon
- EPC Gen 2 compatibility
- "Kill" switch with 24-bit password security
- High-speed writes (5 ms/16 bits, typical)



\*Satellite is a trademark or registered trademark of Impinj, Inc. in the United States and other countries

**RF IDentics Inc.**  
**1100 Hynes Ave. S.W**  
**Grand Rapids, MI. 49507**  
**www.rfidentics.com**

**Phone: +1 616 243 1200**  
**Fax: +1 616 245 2610**  
**gburns@rfidentics.com**

**Proprietary Information**



**Hong Kong**  
 Tel: 852-23702227  
 Fax: 852-23702054  
 sales@sysscan.com.hk

**China & Hong Kong**  
**Guangzhou**  
 Tel: 86-20-87591553  
 Fax: 86-20-87598472  
 gz\_sales@sysscan.com.hk

**Shanghai**  
 Tel: 86-21-62825319  
 Fax: 86-21-62825283  
 sh\_sales@sysscan.com.hk

