

TOSHIBA

RFID READY B-SA4



Specifications

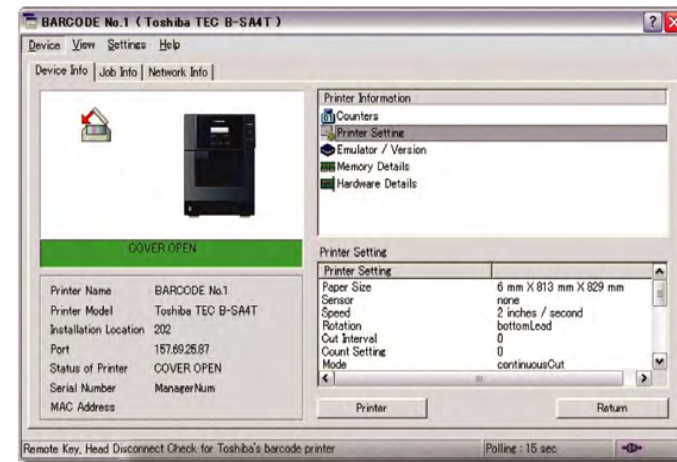
Models	B-SA4TM-GS12 (200 dpi industrial)	B-SA4TM-TS12 (300 dpi industrial)	B-SA4TP-GS12 (200 dpi desktop)	B-SA4TP-TS12 (300 dpi desktop)
Technology	Thermal Transfer / direct thermal			
Resolution	8 dots/mm (203 dpi), optional 11.8 dots/mm (300 dpi)			
Max. Print Width	104 mm/ 4.09", 105.7 mm/4.16" with 300 dpi printhead			
Max. Print Length	995 mm/ 39.17"			
Print Speed	Up to 152.4 mm/sec (6 ips)			
Interfaces	Bidirectional parallel port, USB 2.0, LAN (100BASE), serial port*, wireless LAN*			
Barcodes	UPC/EAN/JAN, Code 39, Code 93, Code 128, EAN 128, NW7, MSI, Industrial 2 of 5, ITF, Postnet, RM4SCC, KIX-code, RSS14, Customer Bar Code			
2D Codes	Data Matrix, PDF 417, Maxicode, QR code, Micro PDF 417, CP Code			
Fonts	Bitmap font (21 fonts), Outline font (4 types), Price font (3 types)			
Optional	Cutter module, strip module, wireless LAN board, serial interface board, RFID modules, 300 dpi printhead, RTC (real time clock)			
Power Supply	Universal power source AC 100 to 240V, 50/60Hz ±10%			
Dimensions	TM: 238 mm (W) x 401.7 mm (D) x 331.5 mm (H) (or 9.37" W x 15.8" D x 13" H) TP: 244 mm (W) x 319 mm (D) x 366 mm (H) (or 9.6" W x 12.6" D x 14.4" H)			
Weight	TM: 15 kg / 33 lbs. TP: 12.7 kg / 28 lbs. (without media and ribbon)			

* Option

Customers' benefits

The B-SA4 is packed with a multitude of features for the user, including:

- high speed printing leading to increased efficiency and productivity
- time-saving and minimal training due to fast and easy handling
- lower servicing and maintenance cost with user toolless replacement of the print head and platen
- versatile design to suit any environment or application
- perfect readability of labels and barcodes due to flexible high quality print technology
- Bartender UltraLite labelling software.



TOSHIBA

TOSHIBA TEC AMERICA
4401-A Bankers Circle
Atlanta, GA 30360
U.S.A.
Telephone (770) 449-3040
Fax (770) 449-1152
www.toshibatecusa.com

TOSHIBA TEC CANADA INC.
370 Britannia Road East, Unit #1
Mississauga, Ontario
L4Z 1X9, Canada
Telephone (905) 890-8283
Fax (905) 890-0082
www.toshibateccanada.com

www.toshibatecusa.com

* Networking functions are based on the new e-studio series, an evolutionary family of information devices that fit perfectly within office information environments.

TOSHIBA TEC announces the first of a new generation of products within their globally recognized, highly diverse product line. The TOSHIBA B-SA4 barcode label printer provides the functionality and robustness of an industrial printer with the compact footprint and ease of use of a desktop printer. For ultimate networking capabilities*, it comes with a wide variety of communication interfaces, enabling you to manage your whole network of printers from a central source.

Versatile design with industrial performance

The B-SA4 really is the perfect 'Total Solution' for any printing application, with high-quality output, industrial performance, versatile design, advanced functionality including RFID options and the backing of a globally recognized quality brand.

Its ergonomic design makes the B-SA4 the printer of choice for any light industrial or back-office environment. Its superior quality output and exceptional performance ensure that it fits perfectly with robust industrial environments.



Speed and Functionality

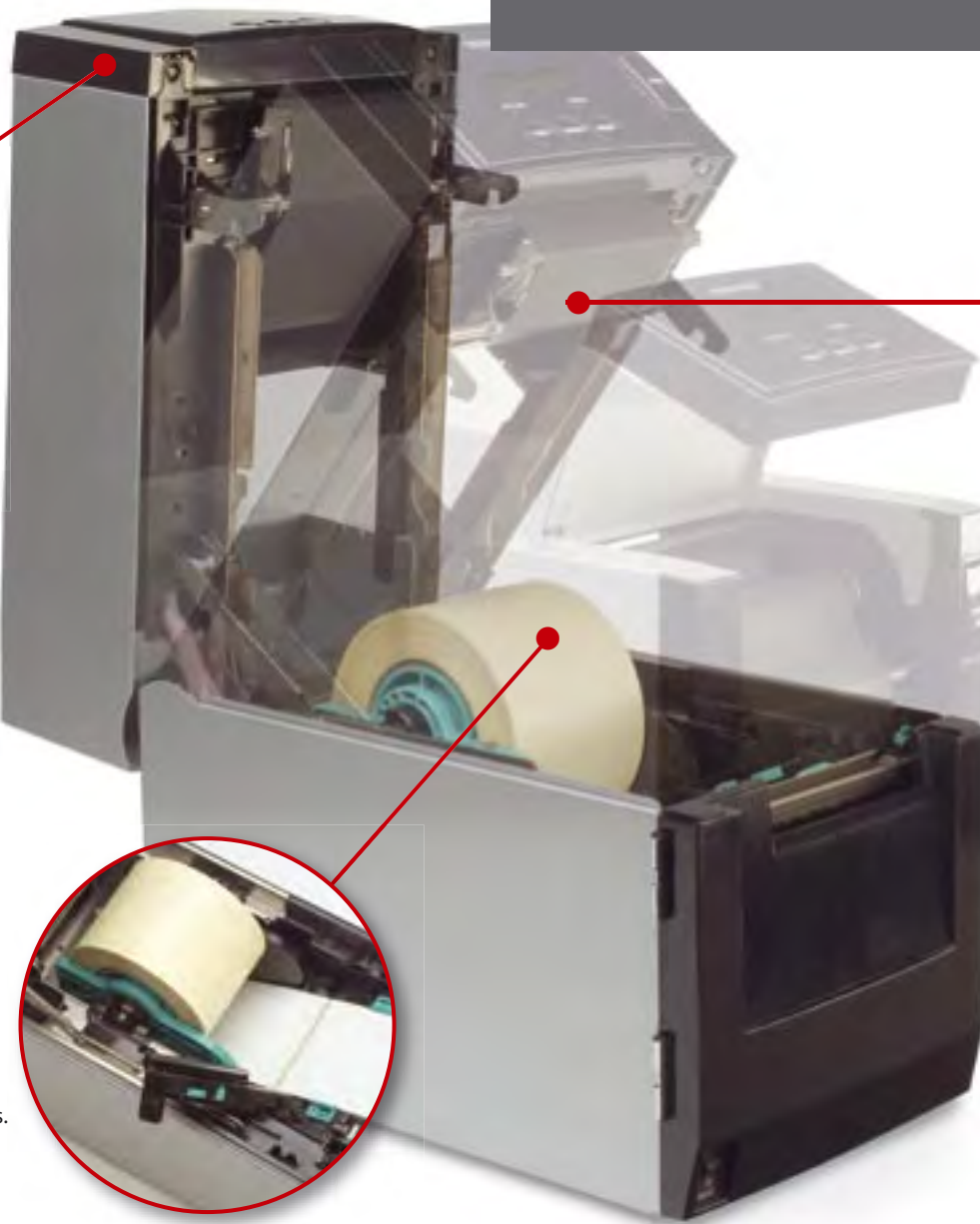
This desktop printer with the performance of an industrial printer, offers high-speed printing and enhanced throughput via a large choice of network interfaces: parallel, USB 2.0 and internal LAN as standard, with optional serial, wireless LAN and RFID interfaces (HF and UHF).

Backward Compatibility

The B-SA4 is compatible with all legacy systems, TOSHIBA or non-TOSHIBA. The powerful BCI (programmable Basic Command Interpreter) allows the B-SA4 to print via non-TPCL datastreams.

Ease of Use

The graphical LCD display and simple to follow menu, ensures the user can set up and operate the B-SA4 with ease. The open-access front-loading feature, with a space saving ergonomic design, allows trouble-free drop-in media loading with a moveable sensor adaptable to a wide range of different types of media.



B-SA4

Suitable Applications

- Manufacturing
- Automotive
- Chemical Industry
- Pharmaceutical Industry
- Textile Industry
- Electronics
- Telecommunications
- Food Sector
- Retail Distribution
- Transport and Logistics
- Healthcare
- Utilities
- Government

Compact and Robust

With a footprint close to A4 in size, the front opening, top loading design ensures the B-SA4 is compact, while the choice of casing (plastic or metal) guarantees the printer is ergonomic for the office or robust enough for harsh operating environments. This provides the flexibility to configure the printer to suit most applications, from desktop to industrial. Extras such as peel-off and cutter modules fit neatly inside the front cover, ensuring the printer remains compact.

SNMP Tools

The B-SA4 comes with an entire Central Network Management Suite, that allows the user to:

- manage all the SNMP printers in the network through their IP address and serial number
- update and format firmware across the network simultaneously
- view the status of each individual printer in real-time with real-time alerts, including instructions for troubleshooting.

The perfect 'Total Solution' for any printing application with high-quality output !

High Print Quality

Fitted with a 200 dpi printhead as standard and with the flexibility to easily upgrade to 300 dpi, these machines are unique in the market.

Fully Compatible

Software and supplies are compatible with TOSHIBA's previous range topping models - the B-452 and B-431 printers, existing media stocks and grades do not need to be changed.

Ease of Maintenance

The B-SA4 facilitates simple user maintenance with easy access to main service parts. The snap-in printhead and quick change platen roller can be replaced by the operator without engineer intervention, lowering the total cost of ownership.



Options

- Real time clock
- Peel off
- Cutter
- RFID kits (HF and UHF).



Hong Kong
Tel: 852 - 2370 2227
Fax: 852 - 2370 2054

<http://www.sysscan.com.hk>

China & Hong Kong

Guangzhou
Tel: 86 - 20 - 2882 1366
Fax: 86 - 20 - 8761 0213

Shanghai
Tel: 86 - 21 - 6282 5319
Fax: 86 - 21 - 6282 5283

<http://www.sysscan.com.cn>

